



## Southern California Artists Painting for the Environment

P.O. Box 30932 Santa Barbara, CA 93130, [info@s-c-a-p-e.org](mailto:info@s-c-a-p-e.org)

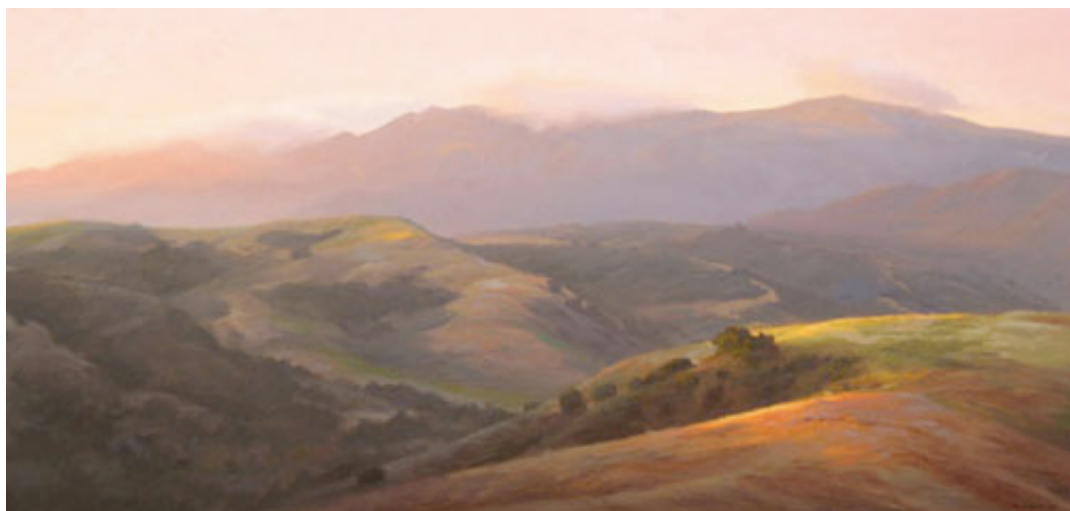
[Home](#)
[About Scape](#)
[News](#)
[Workshops](#)
[Shows](#)
[Paint-Outs](#)
[Calendar](#)
[Join](#)
[Resources](#)
[Member Websites](#)
[Archive](#)
[Contact](#)

### Workshops

(Click [here](#) to return to main workshops menu)

**SOLD OUT!**

## Announcing a new SCAPE workshop by Richard Schloss



*Evening Light in Eagle Canyon*, oil on canvas, 24 x 52

### *Light in the Landscape: Studio Painting from Digital Photos*

**Saturday, February 25 & Saturday, March 4, 2006**

A two-day oil painting workshop for all skill levels.

Explore light in landscape oil painting with acclaimed artist Richard Schloss. Learn to paint more effectively and use photography in the painting process through discussion and demonstrations. Challenge your awareness of how we define our world, how we perceive and interpret light, and how to paint light. Have fun painting from your own favorite photos. Take away new work, ideas and inspiration. This unique two-day studio workshop will be held at the Goleta Valley Community Center on consecutive Saturdays.

Richard Schloss, a long-term resident and painter of Santa Barbara

#### **To enroll:**

Send \$225 to Lizabeth Madal. Make check payable to SCAPE.

#### **Coordinator:**

Lizabeth Madal  
P.O. Box 30932  
Santa Barbara, CA 93130

landscapes, has been a member of the Oak Group since its inception in 1986. He holds a Master of Fine Arts in Painting from UCSB. Richard currently paints en plein air on smaller paintings, but does most work in the studio on larger paintings.

(805) 683-8788

(805) 967-2835 (fax)

[lizabethmadal@hotmail.com](mailto:lizabethmadal@hotmail.com)

Richard's exquisite landscape paintings have been featured in fine art galleries in Santa Barbara and San Francisco, the Santa Barbara Museum of Natural History, and publications such as Fine Art Connoisseur, America West Magazine, Southwest Art and American Artist. His work is in many public and private collections worldwide. He currently exhibits at the Easton Gallery in Montecito. To see more of Richard's work, visit [www.rschloss.com](http://www.rschloss.com)

Note: Class is limited to 15 participants. You will be enrolled in the order your check is received. Cancellations made at least one month before the workshop begins will receive a full refund less \$50; thereafter your tuition will be refunded only if your place can be filled.

[Shows](#) | [News](#) | [Paint-Outs](#) | [Workshops](#) | [About](#) | [Join](#) | [Calendar](#) | [Resources](#) | [Member Websites](#) | [Contact](#)