



NEWSLETTER FOR FEBRUARY 2011

1. Exhibits Update
2. Call to Artists
3. Workshops
4. Paint-Out Saturday February 12
5. Member News

1. EXHIBITS UPDATE

Thank you to all who participated in our January Heal the Ocean Exhibit at the Faulkner Gallery! SCAPE CONGRATULATES THE AWARD WINNING ARTISTS chosen by Juror David Gallup and Heal the Ocean. This show had huge participation and many wonderful painting including many LARGE works. We wish we had had space for more!

AWARDS:

Best oil, Steve Richardson. Honorable mention, Michelle Janee
Acrylic, Filiberto Lomeli, Honorable Mention, John Rindlaub
Water color, Larry Iwerks, Honorable Mention, Jamee Aubrey
Pastel, Jenenne Behl, Honorable Mention, Ann Sanders
Mixed Media, Carol Carbine. Honorable Mention, Michelle Zuzalek
Beneficiary's choice, Tom Keenan

FUTURE EXHIBITS:

PHOENIX SHOW. ART ALONG THE CREEK. SAVING LAND , SAVING LIVES
MEMORIAL DAY WEEKEND, May 28,29,30, 2011

Ingathering Saturday 10-12. Exhibit will open to the public at 1:00 PM. Reception and award ceremony will be Sunday from 2-3. Music all weekend! All forms of paintings are welcome, Abstract, Figurative, Landscapes!

LOS PADRES FOREST WATCH

JULY MONTH LONG EXHIBIT AT FAULKNER GALLERY.

Reception to coincide with First Thursday, July 7 at 5:00 pm.

Several paint outs will be organized for painting opportunities. Stay tuned!

2. CALL TO ARTISTS

Thank you for your continued SCAPE membership and support of our beneficiaries. We would love you to volunteer to continue the legacy of supporting our local environment! The more volunteers we have participating, the more fun everyone has: please help make these worthwhile exhibits a success! Contact Leigh Sparks Princessleighm@aol.com.

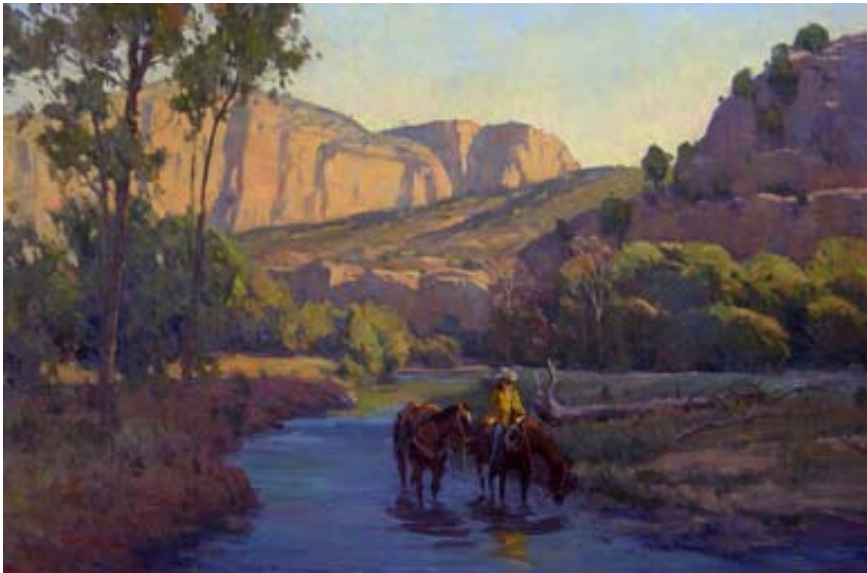
* * *

Call to All Artists: SBAA will be managing the Art Show for the International Orchid Show.

Please go to www.SBorchidshow.com and select the last item under the Exhibitors/Vendors tab for details. No permit is required this year, entry forms due February 15 or you can enter late at the ingathering with a \$10 late fee. Ingathering is Wednesday, March 9 from 10:00 am-1:00 pm in the Earl Warren Pavilion. Orchids must be featured in the artwork submitted which will be juried. Contact: Jacqui Bravo 564-7019

3. WORKSHOPS 2011

Our workshops lineup is especially exciting this year. Plus we are now sharing access to workshops with SBAA so we are welcome to attend their workshops also. We are making all efforts to keep the cost to artists at a minimum, so I hope all can take advantage of these learning opportunities.



We have several nationally recognized artists coming to the area this year, starting with **Phil Starke** from Tucson, March 25-27. Phil will spend the first two days on location and the last day in the studio.

During the first two days in the field Phil will help us learn to react quickly and simply to shapes and colors, explore the thought process of mixing color outside, and will explore techniques and brushwork. The studio day

will focus on how to use the outdoor color sketch or photograph to develop painting in the studio, color mixing, equipment and supplies, and setting goals.

The workshop includes 2 demonstrations a day and individual critiques and assessment.

Phil studied at the Art Institute of Chicago & the American Academy of Art. Currently living in Tucson, AZ, Phil is represented by Settlers West Gallery in Tucson, Legacy Gallery in Scottsdale and Jackson, WY, and The Grapevine Gallery in Oklahoma City. He teaches nationwide and regularly has workshops at Tucson Art Academy and the Scottsdale Art School. Website: Philstarke.com.

For more information, contact Leigh Sparks at Princessleighhm@aol.com, 805-570-9195, or visit SCAPE website for registration forms. Deposit of \$100 required to hold your spot. Workshop cost is \$375 to SCAPE members.

* * *



End of April we'll be having Ray Roberts. Ray comes highly recommended from many sources. He is working on the description for his workshop with us, and I will share it with you as soon as I receive it. Meanwhile, please check his website, www.krollroberts.com/Gallery%20Ray%20Roberts.htm, and google him for more information. This workshop is filling very quickly, so please contact Dorene White at dorene2007@lightlayer.com if interested. April 29, 30, and May 1, Plein Air Oil. \$375 for SCAPE members.

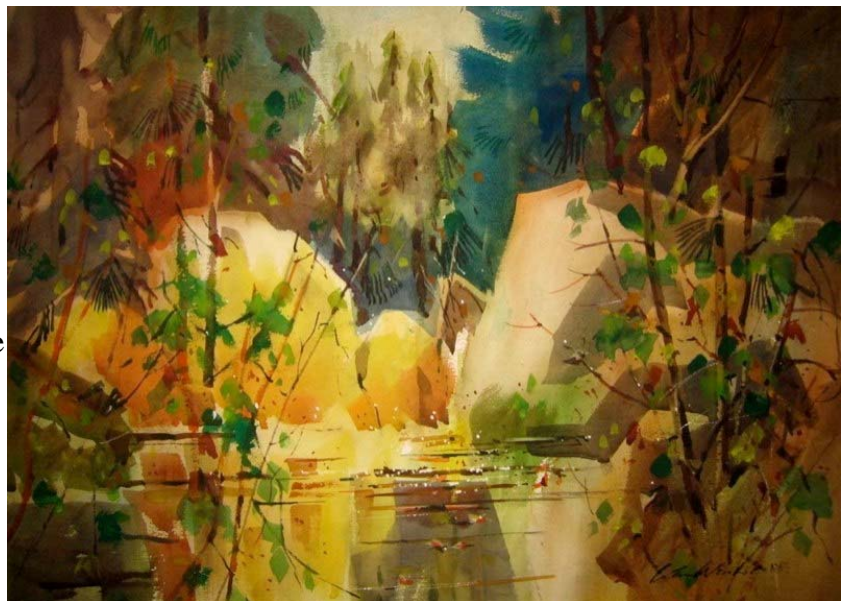
* * *

There must be something about the end of the month, as in May we are having a very fun plein air watercolor workshop with master, Chris Van Winkle, on May 22-24. Chris studied extensively with Robert Hallett and with the legendary Milford Zornes. He has studied further with Robert E. Wood, Frank Webb, George James and Henry Fukuhara.

Chris is an award-winning artist in both the National Watercolor Society and Watercolor West, and is a signature member of the National Watercolor Society, Watercolor West, the Transparent Watercolor Society of America and the Whiskey Painters of America. Chris has served several years on the board of the National Watercolor Society, and as president for three years. He was selected as one of the "top twenty" art instructors by Watercolor Magazine.

We are very lucky to have him nearby and he is welcoming us to his home area of Morro Bay. He'll give an evening demo and get-acquainted on Saturday evening before the workshop, then three full days in the field at some of Chris' favorite spots. This is a wonderful opportunity to have intimate instruction from one of the great masters of the form.

Jamee Aubrey and John Rowbottom are co-coordinators of this fun painting adventure. \$240 for the three days. Housing not included, however, we will be researching potential discount group rates. Contact jamee7@cox.net.



* * *

Our last two workshops of the year are Frank Serrano, August 6-7 for \$270, and John Budicin, November 2-6, \$600. Both workshops are already getting signups, so please don't wait if interested. Contact Dorene White for Frank Serrano at dorene2007@lightlayer.com, and Cyndi Burt for John Budicin at cburt1@cox.net.

The SBAA workshops include Juliette Aristedes, July 7-10, www.aristidesarts.com. This is a 4 day workshop on figure painting in oils with models. \$100 per day or \$350 for all 4 days. Terry Smith coordinator, smithtr@cs.ucsb.edu. Then in August David Gallup is returning to Santa Barbara for a 4 day workshop on color theory for oils. Patti Post is coordinator. September 7-9 Ray Hunter is offering a 3 day workshop on Watercolor landscape painting at the Goleta Valley Community Center. \$75/day, Sue Fridley is coordinator.

4. PAINT-OUTS

FEBRUARY 12 2011 SCAPE PAINT-OUT: **OAK PARK** in Santa Barbara
Saturday, February 12, 9 AM - 12 PM
Alamar Avenue following Mission Creek.

By parking on Alamar Ave we can spread out through-out the park with many views of Mission Creek and tall sycamore trees. OAK PARK is close to US 101 and Arrellaga exit heading north. Please contact Fil (Filiberto) Lomeli for more info or directions. 805-570-4690 or fplomelica@aol.com

5. MEMBER NEWS

If you have a show coming up or would like to share your SCAPE-related news, please send information to Rebecca Stebbins, rebecca@rebeccastebbins.com. Appropriate items will be printed with the permission of the SCAPE board of directors. Please note that SCAPE does not advertise workshops other than SCAPE sponsored workshops.

SCAPE

Southern California Artists Painting for the Environment
P.O. Box 30932, Santa Barbara, CA 93130 - www.s-c-a-p-e.org

Renewal and New Membership Application

Please complete this form indicating your level of membership and your volunteer preferences and send it with your check to **SCAPE** to the address above. Membership is for a calendar year January-December. New members who join after the last major show of the year pay a reduced membership fee of \$20.

March 31 is the deadline for membership payment to be published in the SCAPE Directory, and new members will be listed in the monthly Newsletter. (unless you request otherwise). The Membership Chair is Roberta Nielsen at roberta@robertanielsen.com

Please check one: ___ \$35 member ___ \$50 artist member and spouse ___ supporting/patron member

Name _____ Amount enclosed \$ _____

Street _____ Mail service \$ 7.00 *

City _____ State _____ Zip _____ Check # _____

Phone (home) _____ (cell) _____ Email _____

Website _____ Today's Date _____

Please circle all your volunteer preference(s):

- A. **Board Member:** Chair a committee and attend monthly board meetings
- B. **Exhibit Coordinator:** coordinator for particular shows, oversees committees and committee chairs
- C. **Publicity Creation:** writes press releases, sends to all media, newspaper and radio
- D. **Graphics:** designs invitations, prints, coordinates with mail house; designs and prints posters, designs ads
- E. **Curating:** works with a team to decide where paintings will hang in show
- F. **Ingathering:** team that gathers paintings and collects fees for exhibits
- G. **Volunteers:** helps find volunteers for committees when needed and coordinates workers at exhibits
- H. **Receptions:** helps organize receptions, set-up, drink and food service, shopping and/or cooking
- I. **Hanging:** hangs paintings for exhibitions
- J. **Publicity Distribution:** takes "calls to artists" to art classes, galleries, colleges and art stores for several weeks prior to exhibits and to tourist locations and hotels during week of an exhibit
- K. **Setting up Show:** work with a team to load panels on a truck, to set up panels, tents, chairs & other equipment
- L. **Phone participants**
- M. **Entertainment:** finds and schedules entertainment for exhibitions and receptions
- N. **Workshop Coordinator:** takes reservations for workshops, provides refreshments at workshop, serves as liaison between artist and participants
- O. **Paint-Outs:** finds sites for paint-outs and hosts paint-out days
- P. **Sales:** cashiers at shows and enters sales data in computer
- Q. **Jurying Team:** assists the juror to move paintings in selection of work for a show
- R. **Painting Demonstrations:** demonstrates painting during an exhibit
- S. **Data Entry:** enters artist information on computer during an ingathering
- T. **Take Down:** dismantles tents, panels etc. after a show and delivers to storage garage
- U. **Newsletter:** edits articles and prepares them to be posted on email monthly newsletter & website
- V. **Website:** maintains SCAPE website
- W. **Mailings:** helps stuff envelopes and/or coordinates with mail house
- X. **Hosting Workshop Instructor**
- Y. **Chauffering Workshop Instructor**
- Z. **Photographing Events**

The goals of SCAPE are to promote camaraderie and provide opportunities for exhibition and education among outdoor painters, to raise money to protect open spaces, and to increase public awareness of environmental and conservation issues. SCAPE also provides opportunities for paint-outs and workshops with nationally known artists. Exciting exhibits and sales in collaboration with various environmentally conscious organizations are planned such as the Environmental Defense Center, Santa Barbara Maritime Museum, Land Trust for Santa Barbara County, Santa Barbara Botanic Garden, the Audubon Society, the Santa Barbara Museum of Natural History and the Community Environmental Council (CEC) to name but a few.

*Monthly newsletter will be sent electronically to your email address unless you elect to pay an additional postage fee of \$7.00 per year.
Mail Membership form to SCAPE, P.O. Box 30932 Santa Barbara CA 93130